

The *Work at Height Regulations 2005* require that edge protection in all accessible areas of the tower crane structure should be adequate to prevent falls.

New tower cranes should comply with the requirements of BS EN 13586:2020. This standard includes requirements for stairs, ladders, walkways, platforms, handholds, handrails, intermediate guardrails and side protection.

Access for older tower cranes may not meet these requirements and should be assessed to ensure that they meet the requirements of the *Work at Height Regulations*. Particular attention should be paid to the following items:

- Gaps between adjacent handrails;
- Excessive gaps around openings in decking panels;
- Openings not protected by intermediate guardrails such as tower sections adjacent to rest platforms.



Figure 1 – Handrail Gaps



Figure 2 – Openings in Deck Panels

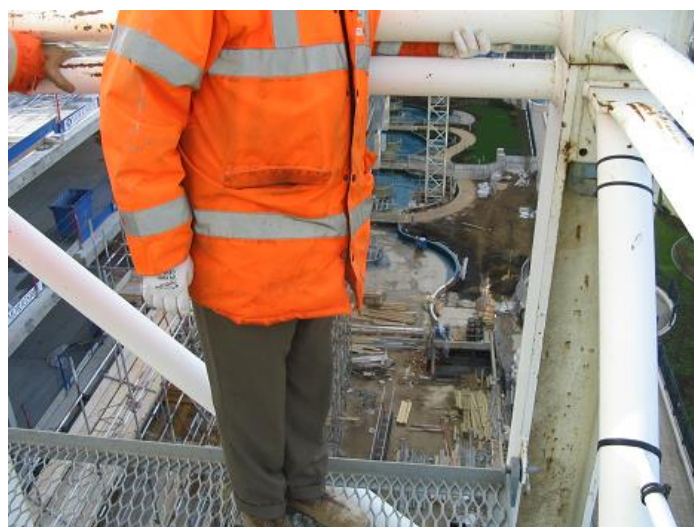


Figure 3 – Lack of Intermediate Guardrail