



Where the Principal Contractor's risk assessment shows that there is possibility of unauthorised access up the crane tower/structure, the organisation hiring the crane should ensure suitable prevention controls are implemented. They should consult with the tower crane supplier who will be able to seek the manufacture's approval for, and arrange, any fixings to the crane structure.

In the past sites have tended to erect 2 metre high wooden hoardings around the base of the tower. This solution has two main disadvantages – firstly, the barrier can be easily overcome with a short ladder and secondly, the hording masks the crane structure at the base of the tower, making it difficult to inspect and examine (see Figure 1).

A more effective solution is the provision of a horizontal barrier and trapdoor in the interior of the tower with an external anti-climbing fan at the same level (see Figure 2). If this solution is adopted it is vital to ensure that the locking arrangements on the trapdoor are such that in event of an emergency, it can be opened from above without the use of a key. Arrangements should also be made to ensure that any key required to open the trapdoor from below is readily available to an authorised person in the event of an emergency, such as the operator being injured or requiring medical assistance. This can be overcome by the use of a keyless lock.

Anti-climbing fans should slope downwards and often consist of 1-metre arms strung with razor wire. If razor wire is used prominent signs should be displayed at the base of the crane and adjacent to the anti-climbing fans (see Figure 3).



Figure 1 – Wooden Hording

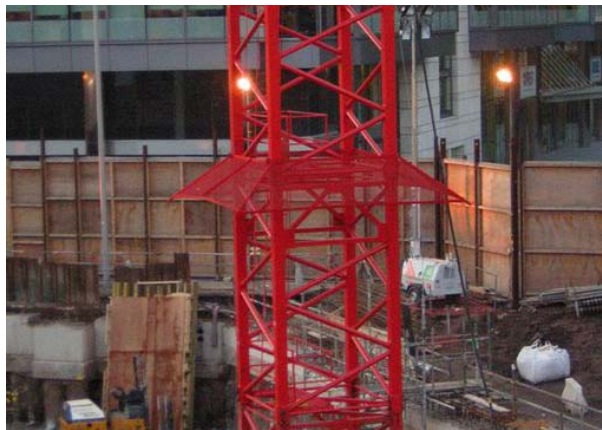


Figure 2 – Anti Climbing Fan



Figure 3 – Razor Wire Warning Sign