

Edge protection in all accessible areas of the tower crane structure should be adequate to prevent falls. The access provisions of tower cranes manufactured since the beginning of 2005 should comply with the requirements of BS EN 13586:2004 *Cranes – Access*. This Standard includes requirements for stairs, ladders, walkways, platforms, handholds, handrails, intermediate guardrails and side protection. Access for older tower cranes may not meet these requirements and should be assessed to ensure that they are adequate for controlled access by trained persons. Particular attention should be paid to items including :-

- Gaps between adjacent handrails;
- Excessive gaps around openings in decking panels;
- Openings not protected by intermediate guardrails such as tower sections adjacent to rest platforms.



Figure 1 – Handrail Gaps



Figure 2 – Openings in Deck Panels

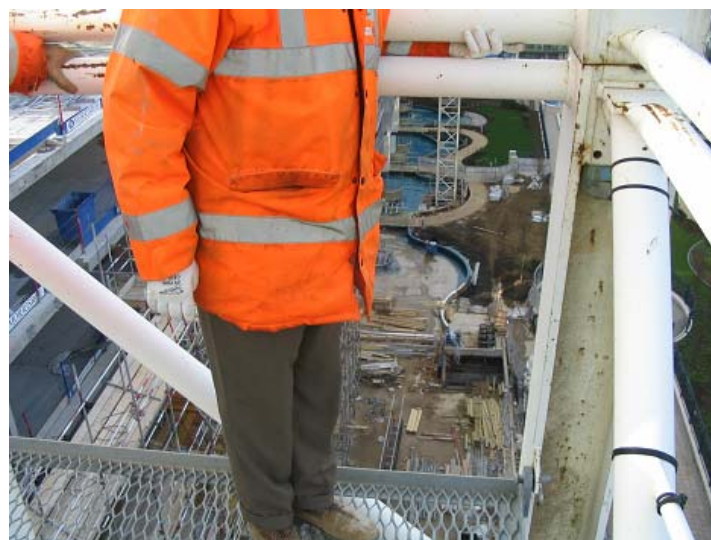


Figure 3 – Lack of Intermediate Guardrail